



SCENOLUMINOSO
LED LIGHTS ARTISTS

MILANO | ROMA | NAPOLI

VAT: ITO9819051211

info@scenoluminoso.it

www.scenoluminoso.it



Informazioni

Dimensioni motori winch:

- h 33 x 24,4 x 19 cm

Range voltggio:

- 90 - 264 VAC

Range frequenza:

- 47 - 63 Hz

Potenza:

- 0.95 / 230 VAC

Corrente di innesco:

- 6A / 230 V

Consumo di energia:

- 84 W

Peso:

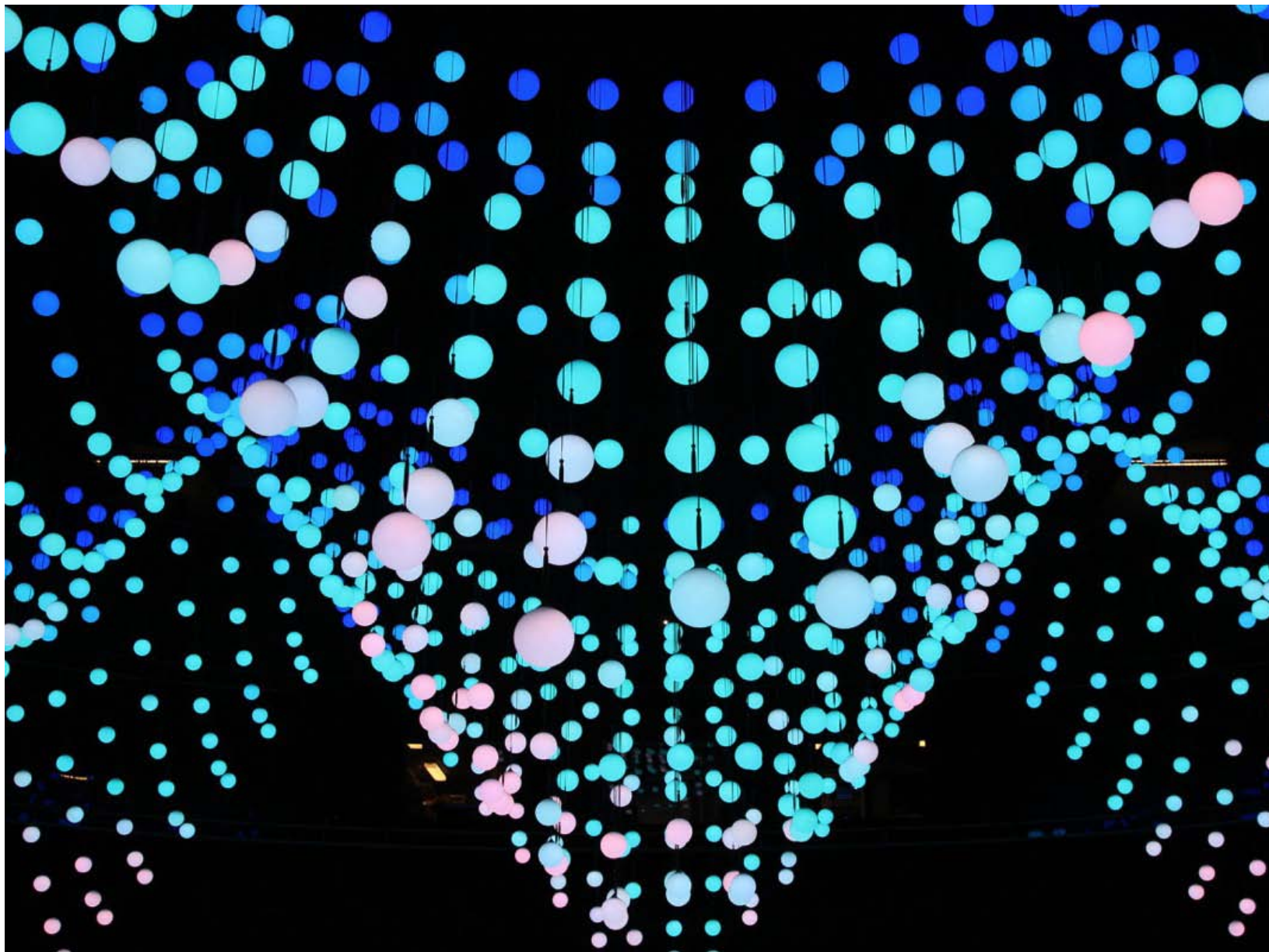
- 7,6 kg


Load capacity:

- 1,7 kg

Oggetti appendibili:

- Sfere RGB
- Custom su richiesta
- Dynamic Led



 ALLESTIMENTI E SCENOGRAFIE		DATA SHEET	
		PRODUCT: WINCH 9000 RELEASE: 1.1.3 LAST UPGRADE: 22/12/2016	
POWER INPUT	VOLTAGE RANGE	90 ~ 264VAC	
	FREQUENCY RANGE	47 ~ 63Hz	
	POWER FACTOR	0.95/230VAC	
	EFFICIENCY	90%	
	INRUSH CURRENT	6A/230V	
	POWER CONSUMPTION	84W	
OTHER	OVER TEMPERATURE	Shut down o/p voltage, recovers automatically after temperature goes down	
	WORKING TEMP.	(-6 ~ +60°C)	
	ISOLATION RESISTANCE	I/P-O/P, I/P-FG, O/P-FG:100M Ohms / 500VDC / 25°C/ 70% RH	
	EMC EMISSION	Compliance to EN55022 (CISPR22), EN61000-3-2,-3	
	PROTECTION RATING	IP33	
MOTOR ENGINE	TYPE	Brushless 3 Phase Motor	
	SPEED	1,2 m/s	
	BRAKE	Safety Hook - Over Speed system	
	TRANSMISSION	Nylon Belt	
	LOAD CAPACITY	1,7 Kg	
MOTOR CONTROL	TYPE	sACN Streaming ACN E1.31	
	PARAMETER CONTROL	8-16 bit	
	POSITIONING ACCURACY	about 20 mm	
	ENCODER	IR Rotary Encoder	
	UP LIMIT	Cam Limit Switch	
CABLE	MATERIALS	HEAVY DUTY NYLON CABLE WHIT INSIDE 5 TWISTED COPPER WIRE	
	LENGHT	8,83 mt - 29 ft	
	BREAKING LOAD	18,7 kg	
	DYNAMIC LOAD	6,3 kg	
	STATIC LOAD	9 kg	
DIMENSIONS AND EXTERIORS	DIMENSIONS	330x244x190mm	
	WEIGHT	7,6 Kg	
	COVER	EPOXY BLACK COVERAGE	
	MOUNT	50 mm TRUSS CLAMP	
CERTIFICATIONS	Machinery Directive	2006/42/EC	
	Approval	CE - UL	



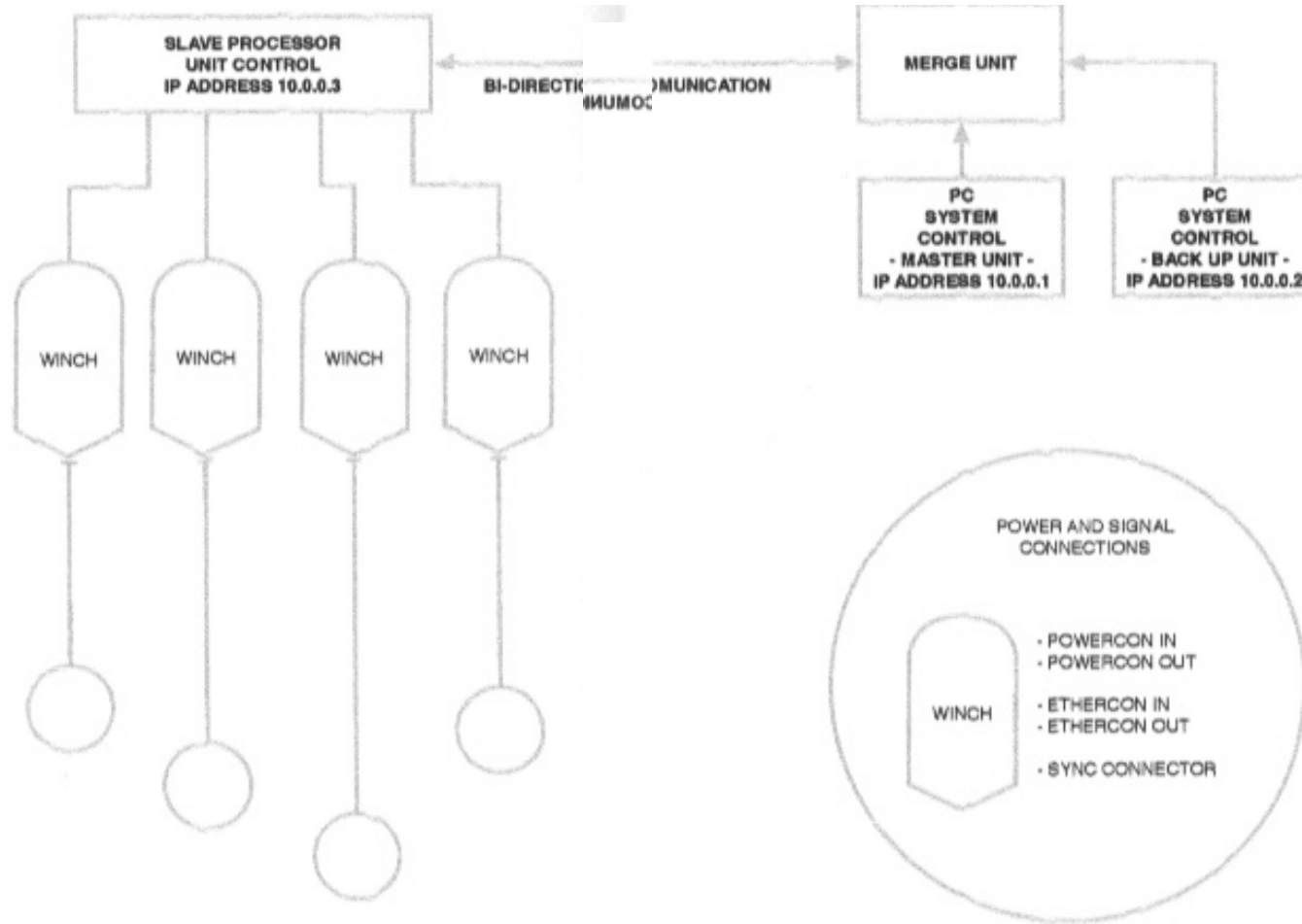


DIAGRAM CONNECTIONS
WINCH 8000
V 1.0



Kinetic Systems

User manual



- **Running without hanging any light-emitting equipment is strictly prohibited.**
- **After installation, don't lift the LED ball up with your hand any time**

KEEP THIS MANUAL FOR TUTURE NEEDS



CONTENTS

1.Overview.....	2
2.Safety Guidelines.....	2
3.Warning.....	3
4.Basic Configurations.....	4
5.Installation Instruction.....	5
6.Operating Requirement.....	6
7.Menu Illustration.....	7
8.Channel Chart.....	8.9
9.Technical Specifications.....	10



1. Overview

Thanks for buying our products! Projector unpacking, check whether there is a result of the damage caused by using this lamp, as soon as possible, contact your dealer or manufacturer.

This product meets the following criteria:

GB7000.1-120007/IEC60598-1:2013

GB7000.217-2008/IEC60598-2-17:1984+A2:1990

2. Safety guidelines

Important Notice

All equipments' installation and maintenance must done by professional technical personnel, and strictly follow the instructions to operate and maintain.

The manufacturer shall not be held liable for any failure to manual normal operation use and responsible for unauthorized allowed to modify the device caused any accidents and loss.

Warning

Installation of LED lift color ball must provide enough safety distance and operational distance.

Running without hanging any light-emitting equipment is strictly prohibited. After installation, don't lift the LED ball up and down with your hand any time



4. Basic configurations



※The following spare parts are not included. if you need, please contact your distributor to purchase them:



5. Installation instruction



Sufficient safety distance must be considered in

Sufficient lifting distance must be considered. Otherwise, the ball may heat the ground or may cause unexpected touches.

Step 1: Installation of lifting machine and clamp



Step 2: Installation of lifting machine and truss



Step 3: Installation of lifting machine and LED color ball



WINCH



6. Operating requirement

Wire wrapped in the lifting machine when the product out of factory we must hang on the color ball when power on starting lifting machine without hanging LED color ball s strictly prohibited because there is failure when draught line wrapped in the lifting machine without gravity!

Step 1

Start power switch of lifting machine. (Start power switch while performing self-checking and resetting.)

Step 2

Insert DMX signal debug and perform reset uniformly



Step 3

Height of all color ball should be same by executing unified reset, make sure LED lift color ball can work normally after ensure all rest normally.



SCENOLUMINOSO
LED LIGHTS ARTISTS

MILANO | ROMA | NAPOLI

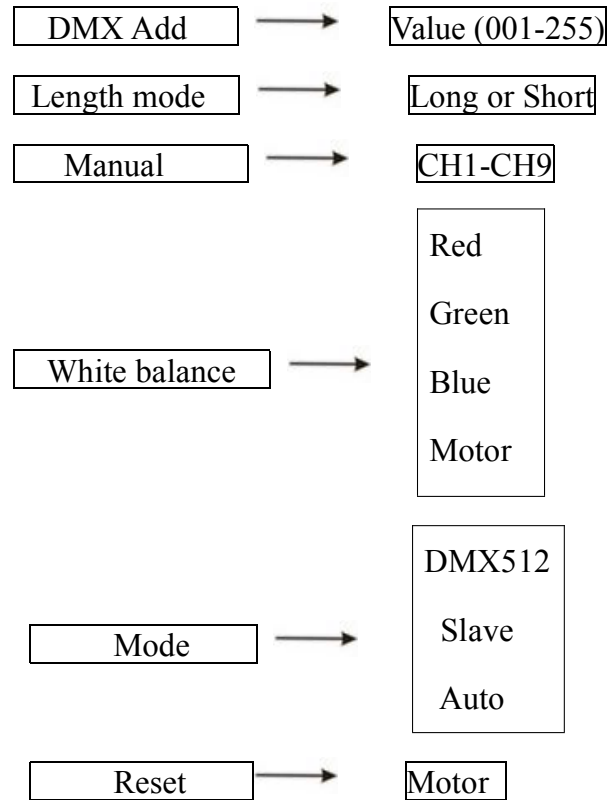
VAT: ITO9819051211

info@scenoluminoso.it

www.scenoluminoso.it



7. Menu illustration (LCD Display)



8. Channel Chart (5CH model:)

DMX Channel	DMX Value	Specification
1.Motor journey	0-255	Lifting from top to bottom
2.Speed	0-255	Speed from fast to slow
3.Red	0-255	Red from dark to bright
4.Green	0-255	Green from dark to bright
5.Blue	0-255	Blue from dark to bright

9CH model:

DMX Channel	DMX Value	Specification
1.Motor journey	0-255	Lifting from top to bottom
2.Motor speed	0-255	Lifting speed from fast to slow
3.Dimmer	0-255	Master dimmer
4.Strobe	0-3 4-44 45-65 66-106 107-127 128-168 169-189 190-230 231-251 252-255	Open Strobe from slow to fast Random strobe from slow to fast Pulse strobe from slow to fast Random pulse strobe from slow to fast Fade-in strobe from slow to fast Random fade-in strobe from slow to fast Fade-out strobe from slow to fast Random fade-out strobe from slow to fast close
5.Red	0-255	Red from dark to bright
6.Green	0-255	Green from dark to bright
7.Blue	0-255	Blue from dark to bright



| WINCH |



8.COLOR MACRO	0-4	No function
	5-9	Static Color Red
	10-14	Static color Amber
	15-19	Static color yellow
	20-24	Static Color Green
	25-29	Static Color Cyan
	30-34	Static Color Blue
	35-39	Static Color Magenta
	40-44	Static Color White
	45-49	No function
	50-94	Eight color step at 9 speeds
	95-99	No function
	100-149	Eight color fade at 5 speeds
	150-154	No function
	155-166	Red+Green from dark to bright
	167-178	Green+Red from bright to dark
	179-190	Green+Blue from dark to bright
	191-202	Blue+Green from bright to dark
	203-214	Blue+Red from dark to bright
	215-226	Red+Blue from bright to dark
227-238	RGB from dark to bright	
239-250	Blue+Red from dark to bright at the same time green from bright to dark	
251-255	Output 100% at the same time	
9.CONTROL	000-127	No function
	128-240	auto programs
	241-245	put a no function value between the front and end of the reset value
	246-250	to reset once channel is held at this value for 3seconds
	251-255	put a no function value between the front and end of the reset value

9. Technical Specifications:

Power supply: 100-240V, 50-60Hz Power consumption: 120W

Channel: 5CH/9CH Maximum quantity in series: 20 units

Operation menu: LCD screen display

Ball size: 15/20/25/35CM

LED source for balls : 42PCS TRI SMD LED

Big tube size:length 1M*diameter 10CM (Vertical)

LED source: 96PCS TRI SMD LED

small tube size:length 1M*diameter 5CM(can make Triangle or parallelogram)

LED source: 48PCS TRI SMD LED

All the winches are made of 3 phase motor.

3M winch information as below:

G.W: 14.5KG (2in1)

Outline size: 252*230*125MM

Packing size: 565*325*205MM(2in1)

6M,9M winches information:

G.W: 18.5KG(2in1)

Outline size: 292*292*126MM

Packing size: 365*360*365MM(2in1)

12M winches information :

G.W: 10.5KG

Outline size: 324*324*125MM

Packing size: 400*400*205MM

packing size of 15CM ball: 680*530*525MM (36in1)

packing size of 20CM ball : 690*445*460MM(12in1)

packing size of 25CM ball: 835*545*565MM (12in1)

packing size of 35CM ball: 360*360*370MM (1in1)

packing size of big tube: 1055*475*500MM (16in1)

packing size of small ball: 1120*440*295MM(24in1)

